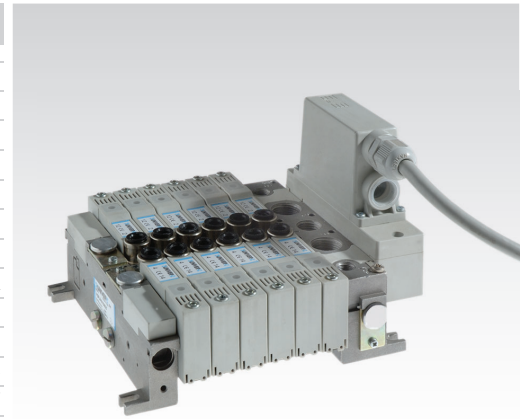


CHARACTERISTICS

Ambient temperature	-5 ÷ +50 °C (PSC-PSP), -15 ÷ +50 °C (PSR)
Fluid	10 µm filtered air, with or without lubrication
Commutation system	spool
Max pressure	9 bar (electrical control), 10 bar (pneumatic control)
Nominal bore (mm)	6
Nominal flow rate (NI/min)	depending on the type of fittings (see table)*
Connections	tube Ø 4, 6, 8
Valve body	zamak
Seals	NBR
Spool	aluminium
Electropilot/Coil	B series/U04
Power consumption	1,35 W
Voltage	24 V DC (12 V DC upon request)
Protection degree	IP65
Manual override	recessed button - 1 position (PSC), impulse screw - 1-2 positions (PSP)



Available ATEX version upon request
CE Ex II 2Gc IICT5 II 2Dc T100°C

	Ø4	Ø6	Ø8
Straight fitting	200	510	830
Elbow fitting	140	370	700

CODIFICATION KEY

P	S	C	2	6	0	2	4	
1	2	3	4	5	6			

1 Series	2 Type	3 Control 14	4 Return 12
PSC = Separate wires PSP = Plug-in PSR = Pneumatic	2 = 5/2 3 = 5/3 c.c. 4 = 5/3 o.c. 5 = 5/3 p.c. 6 = 3/2+3/2 NC-NC 7 = 3/2+3/2 NC-NO 8 = 3/2+3/2 NO-NO	2 = Pneumatic amplified 6 = Electrical amplified	0 = Pneumatic spring 1 = Mechanical spring 2 = Pneumatic amplified 3 = Pneumatic not amplified 6 = Electrical amplified 7 = Electrical not amplified

5 Voltage and coil	6 ATEX option
Only for PSC and PSP series, assembled coils with standard supplied led 24 = 24 V (standard) 12 = 12 V (upon request)	X = Atex (upon request) See ATEX Catalogue for types and versions

c.c. = closed centres o.c. = open centres p.c. = pressurized centres

PSC Electrical impulse - Electrical connection with separate wires

■ Single impulse

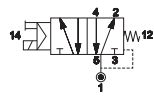
	PSC26024
	PSC26124

■ Double impulse

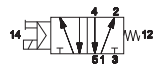
	PSC26624		PSC66624
	PSC36624		PSC76624
	PSC46624		PSC86624
	PSC56624		

PSP Electrical impulse - Plug-in integrated electrical connection

Single impulse

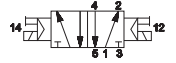


PSP26024

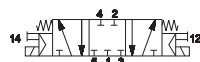


PSP26124

Double impulse



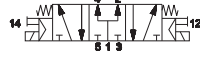
PSP26624



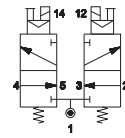
PSP36624



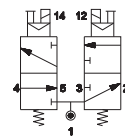
PSP46624



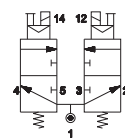
PSP56624



PSP66624



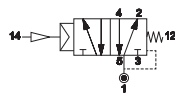
PSP76624



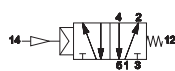
PSP86624

PSR Pneumatic impulse - Pneumatic operation

Single impulse

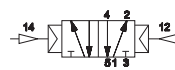


PSR220

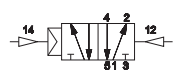


PSR221

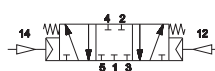
Double impulse



PSR222



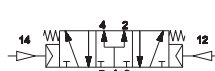
PSR223



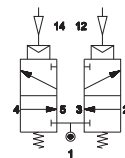
PSR322



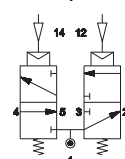
PSR422



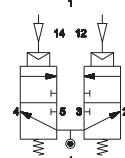
PSR522



PSR622



PSR722



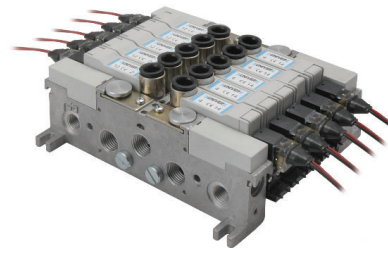
PSR822

PSC Manifold with single electrical connection

- With 26 mm inlet plate and 14,5 mm end plate with DIN rail (EN50022)



- With 14,5 mm inlet and end plate



PSP Manifold with multipolar connection

- With 26 mm inlet plate and 14,5 mm end plate with multipolar connector

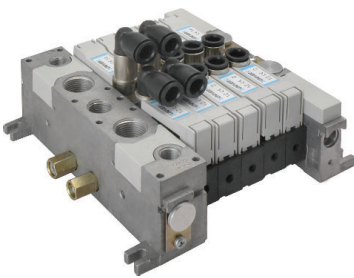


- With 26 mm inlet plate and 14,5 mm end plate with multipolar connector and intermediate plate

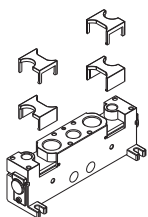


PSR Manifold with pneumatic operation

- With 26 mm inlet plate and 14,5 mm end plate

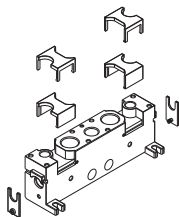


PS14100



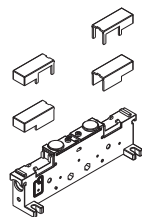
26 mm inlet plate
internal pilot supply

PS14200



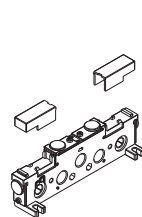
26 mm inlet plate
external pilot supply

PS15000



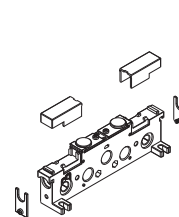
blank plate

PS15100



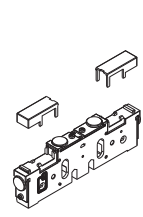
14,5 mm inlet plate
internal pilot supply

PS15200



14,5 mm inlet plate
external pilot supply

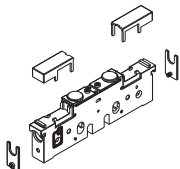
PS15300*



14,5 mm intermediate
plate, closed air supply,
open exhausts

PS15310*	PS15320*	PS15330*	PS15340	PS15350	PS15360
14,5 mm intermediate plate, open supply, closed exhausts	14,5 mm intermediate blank plate	14,5 mm intermediate open plate	intermediate supply plate with closed exhausts and internal pilot supply	intermediate supply plate with closed exhausts and external pilot supply	intermediate supply plate with open exhausts and internal pilot supply

PS15370



intermediate supply plate with open exhausts and external pilot supply

* = For intermediate plate with closed pilot supply ports add suffix 1 to part number.
The intermediate plate takes one valve place. This needs to be considered for a proper purchase of modular tie rods.

Electropilots are supplied through end plates for internal as well as external supply. In case two different working pressures are applied to the end plates, it is possible to supply either all pilots with one of the two pressures (in general the higher one) or the pilots of each valve group with the working pressure of the same. This is made possible by means of a proper pressure separator. This same principle applies also in presence of more than two different pressures: in this case it is necessary to use intermediate supply plates suitably coupled with pressure separators.

PSK100145	PSK200145	PSK200290	PSK200725	PSK300145	PSK401
tie-rod with hexagonal ends	modular tie-rod L1 = 14,5 mm for each place	modular tie-rod L2 = 29 mm for 2 places	modular tie-rod L5 = 72,5 mm for 5 places	counter tie-rod	Fixing plate for DIN rail connection; with screws

GZR-100	GZR-101	GZR-102	GZR-V10004/6/8	GZR-V20004/6/8	GZR-V20L004/6/8
blanking plug	G1/8 Fitting seat reduction - gas thread for silencer mounting	G1/4 Fitting seat reduction - gas thread for silencer mounting	straight fitting GZR-V10004 tube: 4 mm GZR-V10006 tube: 6 mm GZR-V10008 tube: 8 mm	swivel low elbow fitting GZR-V20004 tube: 4 mm GZR-V20006 tube: 6 mm GZR-V20008 tube: 8 mm	swivel high elbow fitting GZR-V20L004 tube: 4 mm GZR-V20L006 tube: 6 mm GZR-V20L008 tube: 8 mm

TIM06M/10M/20M	TIM06B/10B	D-530C-100/200
male connector 25 poles, prewired for monostable valves (M) TIM06M (Max 6M) TIM10M (Max 10M) TIM20M (Max 20M)	male connector 25 poles, prewired for bistable valves (B) TIM06B (Max 6B) TIM10B (Max 10B)	miniature bipolar flying connector: stripped and tinned for protection D-530C-100 (wire length 1000 mm) D-530C-200 (wire length 2000 mm)

Electrical connections

sub-D female connector 25 poles without cable	sub-D flying female connector in compliance with CEI 20-22 O.R. II prewired for 24 coils (3-5-10 m length) M3x12 fixing screws